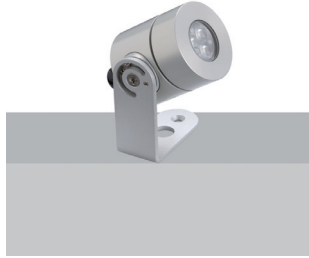


OLU 6

IP rated projectors

design Roberto Mantovani



The Olu range offers IP65 anodized aluminium spotlights, suitable for installation in particularly aggressive environments. Optical quality and fine finishes combine to make a highly reliable product.

La gamma Olu offre proiettori IP65 in alluminio anodizzato, idonei all'installazione in ambienti particolarmente aggressivi. Qualità ottica e finiture di pregio si fondono in un prodotto di grande affidabilità.

La gamme Olu propose des projecteurs IP65 en aluminium anodisé, adaptés pour l'installation dans des milieux particulièrement agressifs. Qualité optique et finitions de qualité fusionnent dans un produit de grande fiabilité.

Die Olu-Reihe bietet IP65-Projektoren aus eloxiertem Aluminium, die sich für den Einbau in besonders aggressiven Umgebungen eignen. Optische Qualität und feine Oberflächen vereinen sich in einem Produkt mit hoher Zuverlässigkeit.

La gama Olu ofrece proyectores IP65 de aluminio anodizado, adecuados para la instalación en ambientes especialmente agresivos. La calidad óptica y los acabados finos se combinan en un producto de gran fiabilidad.



IP65 made in Italy

Supply current
350-500mA (V, 8,7V)

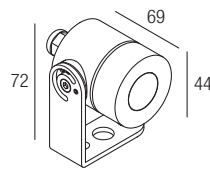
Power
3-6W

Series wiring

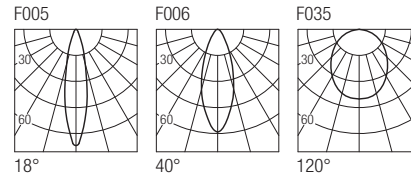
CRI
85

2-Step MacAdam

Dimensions



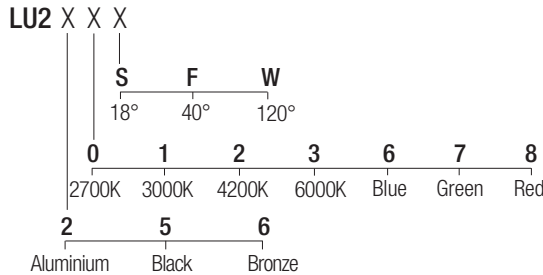
Photometric diagrams



CCT/CRI/Flux

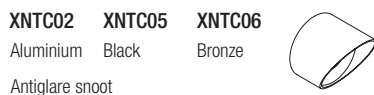
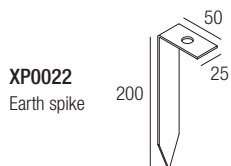
	350mA	500mA
2700K	267lm	384lm
3000K	279lm	400lm
4200K	309lm	462lm
6000K	342lm	495lm

Code construction



Note: Made-to-measure cable available on request.

Accessories



Note: The filter must be ordered together with the lighting fixture.

Drivers 350mA

- on/off
AL1034 (1..3) IP20 ⌀ 30 mm
AL1035 (1..3) IP20 ⌀ 40 mm
AL1037 (1..5) IP20 S.P. ⌀ 55 mm
AL9011 (1..4) IP67 ⌀ 44 mm
- dimmmable
AL4000 (1..4) IP20 PUSH 0/1..10V ⌀ 72 mm
ALD435 (1..3) IP20 DALI 2 PUSH ⌀ 36 mm
AL4051 (1..4) IP20 DALI 2 ⌀ 72 mm
AL4053 (1..4) IP20 PUSH IGBT-TRIAC ⌀ 56 mm
AL6035 (1..3) IP67 DALI 2 ⌀ 44 mm
AL8035 (2..4) IP67 DALI 2 ⌀ 48 mm

Drivers 500mA

- on/off
AL1074 (1..2) IP20 ⌀ 30 mm
AL1077 (1..2) IP20 ⌀ 40 mm
AL1084 (1..3) IP20 S.P. ⌀ 55 mm
AL9051 (1..3) IP67 ⌀ 44 mm
- dimmmable
AL4010 (1..4) IP20 PUSH 0/1..10V ⌀ 72 mm
ALD450 (1..2) IP20 DALI 2 PUSH ⌀ 36 mm
AL4151 (1..4) IP20 DALI 2 ⌀ 72 mm
AL4153 (1..4) IP20 PUSH IGBT-TRIAC ⌀ 56 mm
AL6050 (1..2) IP67 DALI 2 ⌀ 44 mm
AL8050 (2..4) IP67 DALI 2 ⌀ 48 mm