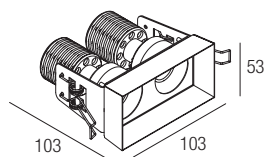


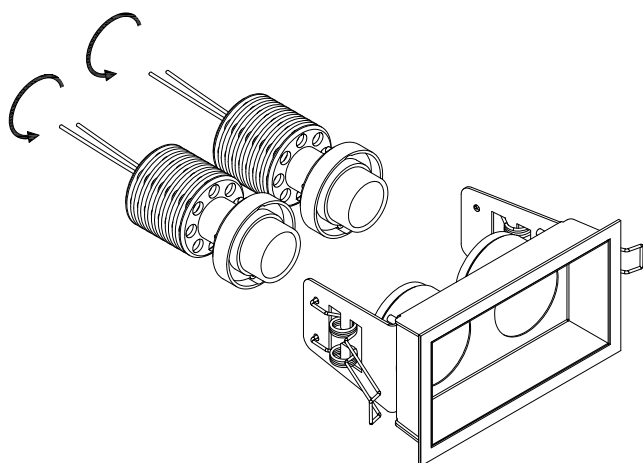
MOON QX120 - MQX12XXXX

Trimless downlights

design Lapo Grassellini

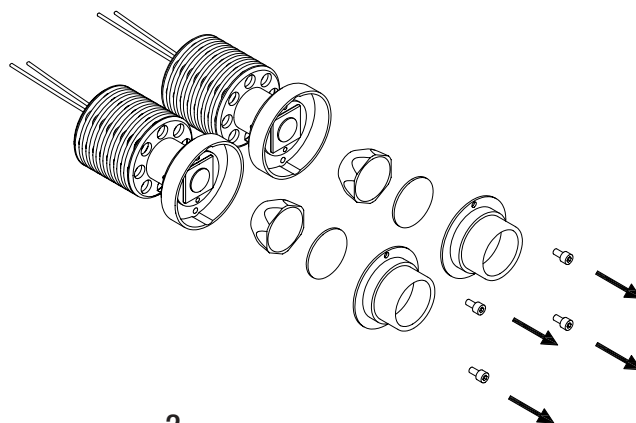


I ISTRUZIONI PER LE AUTORITÀ PREPOSTE ALLA SORVEGLIANZA DEL MERCATO SULLA RIMOZIONE DELLA SORGENTE LUMINOSA E DELLE UNITÀ DI ALIMENTAZIONE SEPARATA
GB INFORMATION FOR MARKET SOURVEILANCE AUTHORITIES ON REMOVAL OF LIGHT SOURCE AND SEPARATE CONTROL GEAR



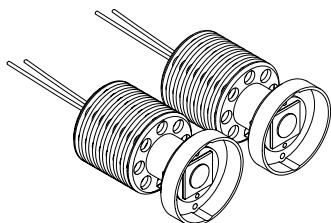
1

I Svitare i corpi retrostanti e separarli dalla parte frontale.
GB Unscrew the rear bodies and separate them from the front part.



2

I Svitare la viti e rimuovere le ottiche.
GB Unscrew the screws and remove the optics.



3

I Sorgenti uminose ispezionabili.
GB Examinaible light sources.