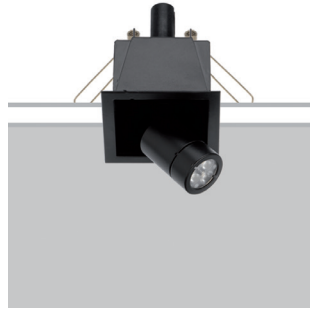


MINILED A Q10

Adjustable downlights

design Lapo Grassellini



The Minileda range of extractable, recessed fixtures offers high performance in extremely compact dimensions. The movement of the head allows wide orientation of the light output, in a fixture with minimal and sophisticated design.

La gamma di incassi estraibili Minileda offre alte prestazioni in dimensioni estremamente compatte. Il movimento della testa permette un'ampia direzionalità del flusso luminoso, in un apparecchio dal design minimale e sofisticato.

La gamme d'encastrables amovibles Minileda offre des prestations élevées dans des dimensions extrêmement compactes. Le mouvement de la tête permet une grande directionnalité du flux lumineux, dans un appareil au design minimaliste et sophistiqué.

CE 58x58mm



IP20 made in Italy

Die ausziehbaren Einbauleuchten der Serie Minileda bieten hohe Leistung bei extrem kompakten Abmessungen. Die Bewegung des Kopfes ermöglicht eine breite Ausrichtung des Lichtstroms, in einer Leuchte mit einem minimalistischen und anspruchsvollen Design.

La gama de luminarias empotrables extraíbles Minileda ofrece altos rendimientos en dimensiones extremadamente compactas. El movimiento del cabezal permite una amplia direccionalidad del flujo luminoso, en un aparato de diseño minimalista y sofisticado.

Supply current

350mA (V_r 8,7V)

Power

3W

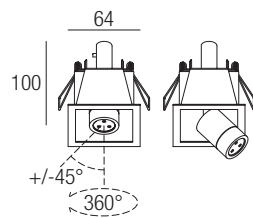
Series wiring

CRI

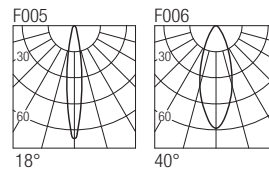
85

2-Step MacAdam

Dimensions



Photometric diagrams

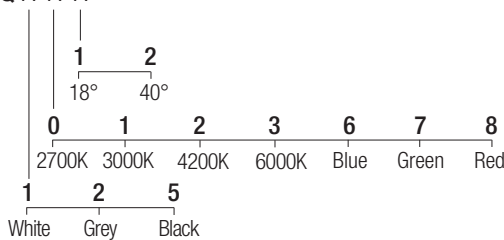


CCT/CRI/Flux

2700K	267lm
3000K	279lm
4200K	309lm
6000K	342lm

Code construction

MLDQ X X X



Note: The finishing refers to the outer ring of the luminaire only, the inner part of the optical compartment is always black.

Drivers

AL7021

24VDC/350mA constant current converter

Drivers 350mA

on/off

AL1034 (1..3) IP20 \varnothing 30 mm

AL1035 (1..3) IP20 \varnothing 40 mm

AL1037 (1..5) IP20 S.P. \varnothing 55 mm

dimnable

AL4000 (1..4) IP20 PUSH 0/1..10V \varnothing 72 mm

ALD435 (1..3) IP20 DALI 2 PUSH \varnothing 36 mm

AL4051 (1..4) IP20 DALI 2 \varnothing 72 mm

AL4053 (1..4) IP20 PUSH IGBT-TRIAC \varnothing 56 mm