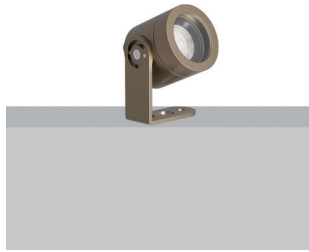


## MAUNA 6

IP rated projectors

design Rod&Todd



IP65 projectors equipped with COB LEDs with CRI98 and R9 93, they offer a wide range of narrow and precise light beams. Made of anodized aluminum, they are suitable for installation in particularly aggressive environments. Optical quality and fine finishes come together in a product of great reliability and quality.

Proiettori IP65 equipaggiati con COB LED con CRI98 e R9 93, in grado di offrire un'ampia gamma di aperture di fascio per effetti luminosi precisi ed efficaci. Realizzati in alluminio anodizzato sono ideali per l'installazione in ambienti particolarmente aggressivi. Qualità ottica e finiture di pregio si fondono in un prodotto di grande affidabilità e qualità.

Projecteurs en aluminium anodisé IP65, adaptés à l'installation dans des environnements particulièrement agressifs. La qualité optique et les finitions raffinées se combinent pour en faire un produit hautement fiable. Avec CRI98 et R9 93 et optiques très avancées, ils offrent des faisceaux lumineux étroits et précis. La gamme d'accessoires comprend le filtre anti-éblouissement pour un confort visuel maximal.

IP65-Projektoren, ausgestattet mit COB-LEDs, CRI98 und R9 93, bieten eine große Auswahl an schmalen und präzisen Lichtstrahlen. Sie bestehen aus anodisiertem Aluminium und sind für die Installation in besonders anspruchsvollen Bereichen geeignet. Optische Qualität und hochwertige Verarbeitung vereinen sich zu einem Produkt von großer Zuverlässigkeit und Qualität.

IP65 made in Italy



**Supply current**  
500mA (V<sub>i</sub> 9V)

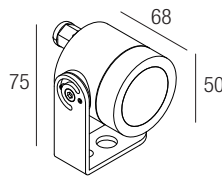
**Power**  
6W

**Series wiring**

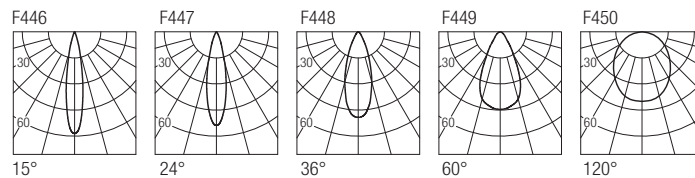
**CRI**  
98

**2-Step MacAdam**

**Dimensions**



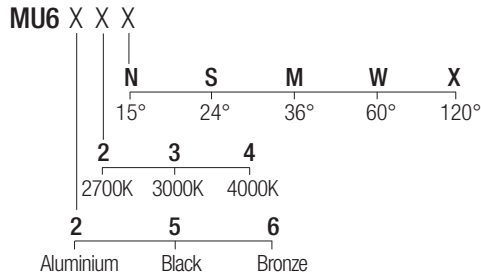
**Photometric diagrams**



**CCT/CRI/Flux**

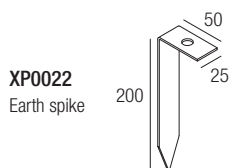
2700K	540 lm
3000K	600 lm
4000K	620 lm

**Code construction**



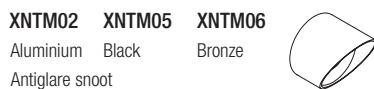
**Note:** Made-to-measure cable available on request.

**Accessories**



**LMU601**  
Low luminance louver

**Note:** The filter must be ordered together with the lighting fixture.



**Drivers 500mA**

- on/off
- AL1074** (1..2) IP20 ⌀ 30 mm
  - AL1077** (1..2) IP20 ⌀ 40 mm
  - AL1084** (1..3) IP20 S.P. ⌀ 55 mm
  - AL9051** (1..3) IP67 ⌀ 44 mm
- dimnable
- AL4010** (1..4) IP20 PUSH 0/1..10V ⌀ 72 mm
  - ALD450** (1..2) IP20 DALI 2 PUSH ⌀ 36 mm
  - AL4151** (1..4) IP20 DALI 2 ⌀ 72 mm
  - AL4153** (1..4) IP20 PUSH IGBT-TRIAC ⌀ 56 mm
  - AL6050** (1..2) IP67 DALI 2 ⌀ 44 mm
  - AL8050** (2..4) IP67 DALI 2 ⌀ 48 mm