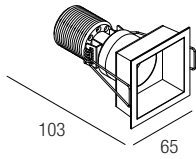
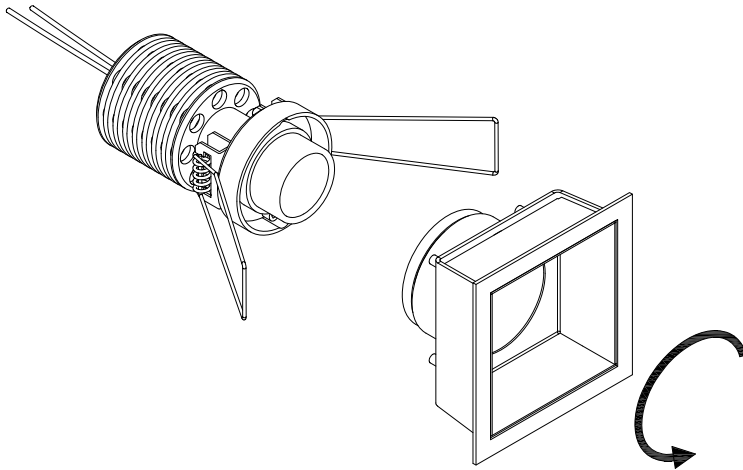


HAP 110 - HP11XXXX

Recessed optic downlights
design Lapo Grassellini

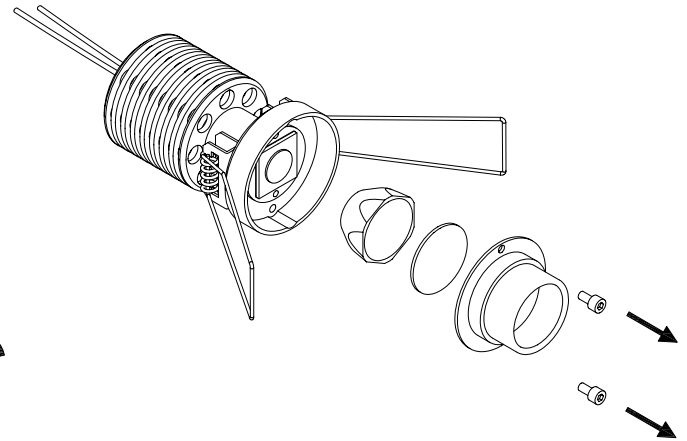


I ISTRUZIONI PER LE AUTORITÀ PREPOSTE ALLA SORVEGLIANZA DEL MERCATO SULLA RIMOZIONE DELLA SORGENTE LUMINOSA E DELLE UNITÀ DI ALIMENTAZIONE SEPARATA
GB INFORMATION FOR MARKET SURVEILLANCE AUTHORITIES ON REMOVAL OF LIGHT SOURCE AND SEPARATE CONTROL GEAR



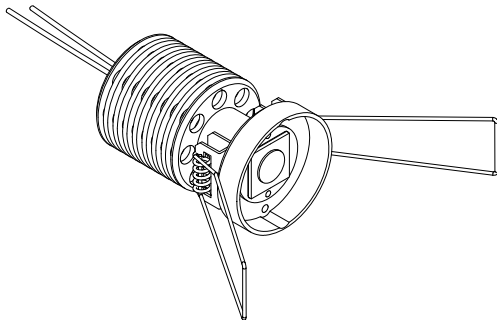
1

I Svitare la parte frontale.
GB Unscrew the front part.



2

I Svitare le viti e rimuovere l'ottica.
GB Unscrew the screws and remove the optic.



3

I Sorgente luminosa ispezionabile.
GB Examinalbe light source.