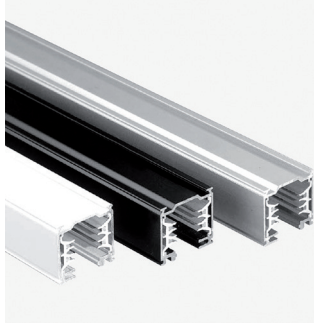


## 230VAC TRACK

Linear System

CE IP20 made in Italy



Three-phase track system for surface installation. The electrified tracks are made of extruded aluminium alloy. The copper conductor cables are housed in high insulation resistance PVC extruded profiles. 230/250V - 16A mains power supply voltage and 380/440V industrial mains voltage. The system includes a wide range of accessories, linear, corner, tee, cross and flexible joints, allowing multiple tracks to be coupled.

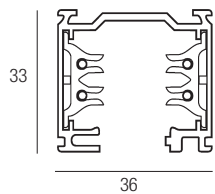
Sistema di binario trifase per installazione superficiale. I binari elettrificati sono costruiti in lega di alluminio estruso. I cavi conduttori in rame sono alloggiati all'interno di profilati estrusi in PVC ad alta resistenza di isolamento. Alimentazione a tensione di rete 230/250V - 16A e a tensione di rete industriale 380/440V. Il sistema comprende un'ampia serie di accessori, giunti lineari, ad angolo, a T, a croce, flessibili, che permettono l'accoppiamento di più binari elettrificati.

Système de rail triphasé pour installation en surface. Les rails électrifiés sont construits en alliage d'aluminium extrudé. Les câbles conducteurs en cuivre sont logés à l'intérieur de profilés extrudés en PVC à haute résistance d'isolement. Alimentation à tension de réseau 230/250V - 16A et à tension de réseau industriel 380/440V. Le système comprend une large gamme d'accessoires, de joints linéaires, à angle, en T, à croix et flexibles qui permettent le couplage de plusieurs rails électrifiés.

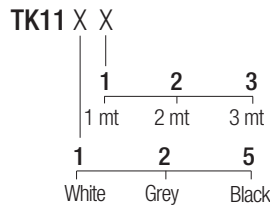
Dreiphasiges Schienensystem zur oberflächlichen Installation. Die Stromschienen werden aus Aluminiumextrusionsguss gefertigt. Die Kupferdrähte befinden sich in den extrudierten Aluminiumprofilen aus PVC mit hohem Isolationswiderstand. Speisung mit Netzspannung 230/250V - 16A und mit Industrienetzspannung 380/440V. Das System bietet zahlreiches Zubehör, lineare Verbindungsstücke, Winkelstücke, T- und Kreuz-Elemente und flexible Elemente, um mehrere Stromschienen miteinander zu verbinden.

Sistema de carril trifásico para instalación superficial. Los carriles electrificados están fabricados en aleación de aluminio extruido. Los cables conductores de cobre se alojan en el interior de los perfiles extruidos de PVC con alta resistencia de aislamiento. Alimentación con tensión de red 230/250V - 16A y con tensión de red industrial 380/440V. El sistema incluye una amplia serie de accesorios, juntas lineales, en ángulo, en T, en cruz, flexibles, que permiten el acoplamiento de más carriles electrificados.

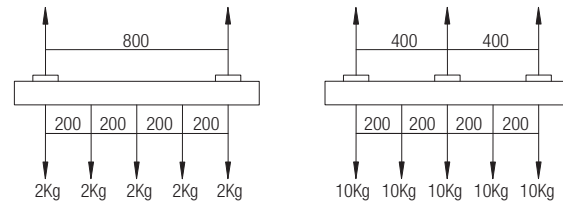
### Dimensions



### Code construction

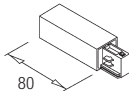


### Load schemes



### Accessories

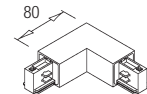
**TK1102** **TK1202** **TK1502**  
White Grey Black  
Right live-end



**TK1103** **TK1203** **TK1503**  
White Grey Black  
Left live-end



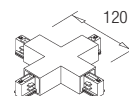
**TK1104** **TK1204** **TK1504**  
White Grey Black  
Inside L joint



**TK1105** **TK1205** **TK1505**  
White Grey Black  
Outside L joint



**TK1106** **TK1206** **TK1506**  
White Grey Black  
X joint



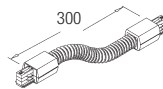
**TK5113** **TK5213** **TK5513**  
White Grey Black  
Right T joint



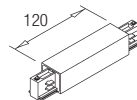
**TK5114** **TK5214** **TK5514**  
White Grey Black  
Left T joint



**TK1115** **TK1215** **TK1515**  
White Grey Black  
Flexible joint



**TK5112** **TK5212** **TK5512**  
White Grey Black  
Central connector and straight joint

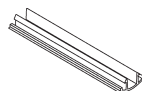


**TK1107** **TK1507**  
White Black  
Electrical straight joint

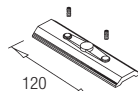


**TK1108** **TK1508**  
White Black  
Mechanical joint

**TK1109** **TK1509**  
White Black  
Track cover 1000mm



**TK1010**  
Plate 120mm



**TK1116** **TK1216** **TK1516**  
White Grey Black  
Dead end



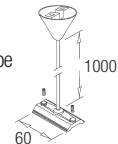
**TK1017**  
Ceiling kit



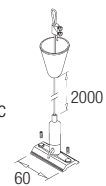
**TK1118** **TK1518**  
White Black  
Suspension kit with steel wire 2000mm



**TK1019**  
Suspension kit with pipe 1000mm



**TK1120** **TK1520**  
White Black  
Suspension kit with steel wire 2000mm and automatic locking device



# FLEXA LIGHTING

Lighting elements



BULL 10  
10W - 230VAC



BULL 20  
20W - 230VAC



BULL 40  
40W - 230VAC



BULL 10 PRECISION  
10W - 230VAC



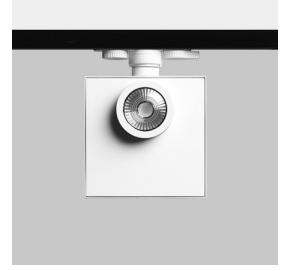
BULL 20 PRECISION  
20W - 230VAC



BULL 10 FOCUS  
10W - 230VAC



BULL 20 FOCUS  
20W - 230VAC

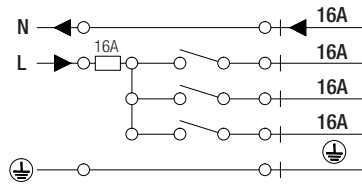


ABRAHM 1020  
10-20W - 230VAC

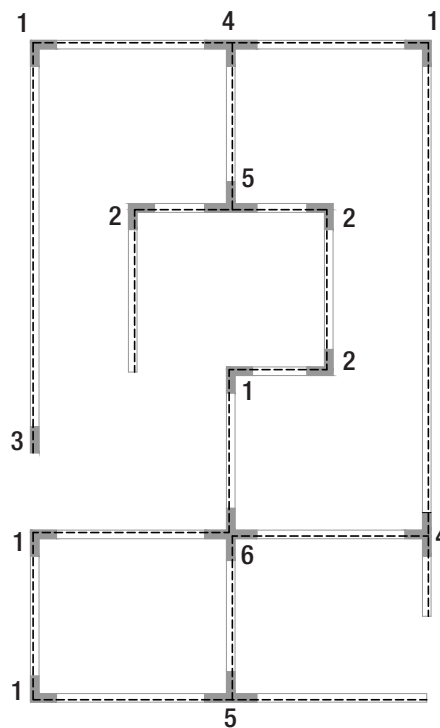
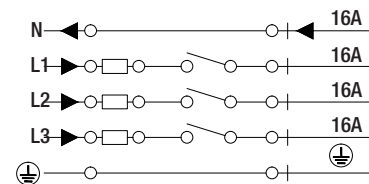


ABRAHM 3040  
30-40W - 230VAC

## 230/250V mains single-phase connection



## 230/400V three-phase mains connection



- 1 Outside L joint
- 2 Inside L joint
- 3 Right live-end
- 4 Right T joint
- 5 Left T joint
- 6 X joint